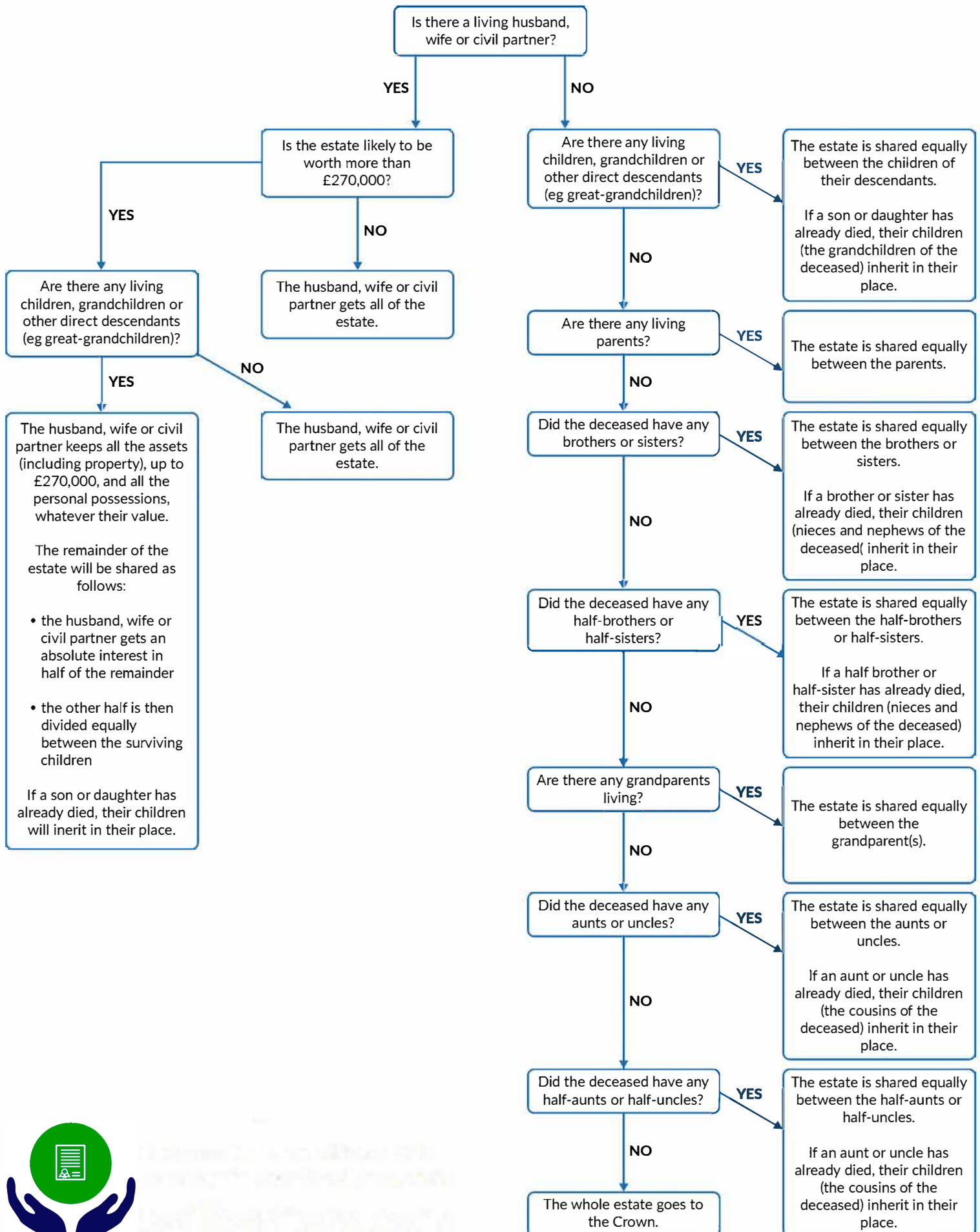


The Rules of Intestacy Flowchart



Please note that this information is provided as a guide and only summarises the laws relating to intestacy in England and Wales as at 2020. This page illustrates the new rules set out in the Inheritance and Trustees' Powers Act 2014 which came into force in October 2014. The Statutory Legacy changed to £270,000 for deaths which occur on or after the 6th February 2020. Information in this flowchart provided by - <https://www.gov.uk/inherits-someone-dies-without-will>